



Olympus Fountain

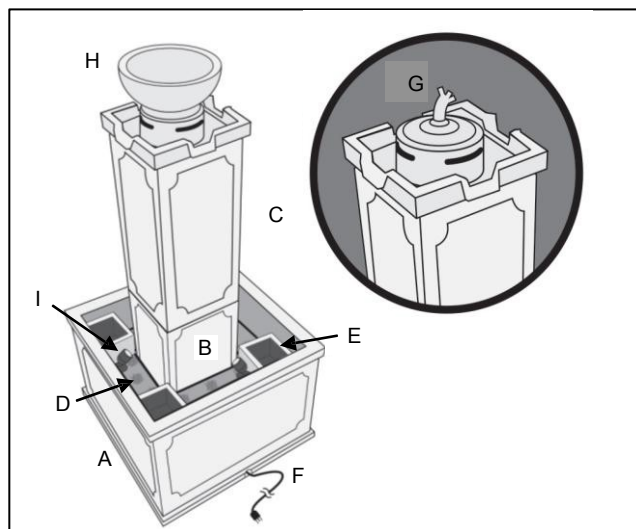
REMINDER
CALL 1-888-755-5641
BEFORE RETURNING TO STORE.



Questions, problems, missing parts? Before returning to your retailer, call our customer service department at 1-888-755-5641, 8 a.m.-6 p.m., EST, Monday-Friday, or email us at customercare@gardeniquedecor.com or visit our website www.gardeniquedecor.com.

PACKAGE CONTENTS

Part	Description	Quantity
A	Fountain Base	1
B	Lower Tower	1
C	Upper Tower	1
D	Splash Guard	1
E	Flower Planter	4
F	Pump	1
G	Fire Torch	1
H	Planter Top	1
I	LED Mini Lights 4Pk	(Optional)



WARNINGS AND CAUTIONS: PUMP

WARNING

- To reduce the risk of electric shock, connect pump only to a Ground Fault Circuit Interrupter (GFCI) outlet.
- Do not exceed the voltage shown on the pump.
- Always disconnect the pump from the power source before performing any maintenance or working on the pump or fountain.
- Inspect the power cord for damage before installation and/or maintenance. Replace the entire pump if damage is found.
- Do not remove the grounding pin from the power cord on pumps with a three-prong, grounded-type plug.

CAUTION

- Do not install the fountain within 10 ft. (3.05 m) of a pool or spa. If the pump is connected to a Ground Fault Circuit Interrupter (GFCI) protected circuit, the fountain can be installed no less than 5 ft. (1.52 m) from a pool or spa.
- Use the pump only with portable, self-contained fountains no larger than 5 ft. in any dimension.
- Use a proper power source as indicated on the pump label. Keep the cord away from high temperatures and/or heat sources.
- Do not lift the pump by its power cord.
- Keep the fountain out of reach of children.
- Do not let the pump run dry. Pump must be completely submerged for proper operation and cooling.
- Do not pump heated liquids.
- Operate with freshwater only. Avoid heavily chlorinated water and water with high pH levels.

PLEASE CALL 1 (888) 755-5641 BEFORE RETURNING TO THE STORE.
WWW.GARDENIQUEDECOR.COM

PREPARATION

Before beginning assembly or operation of product, make sure all parts are present. Compare parts with package contents list and diagram above. If any part is missing or damaged, do not attempt to assemble, install or operate the product. Contact customer service for replacement parts.

- Estimated Assembly Time: Less than 15 Minutes.
- No tools required for assembly.

ASSEMBLY INSTRUCTIONS

1. Select a flat, level surface for assembly and final location of your fountain. Assemble the base, Run the power wire from the pump down through the PVC pipe and out through the notch at the bottom. Fig. 1A.

Note: If your fountain included lights run the light power wire down through the PVC pipe and out through the notch at the bottom as well. Fig.1B.

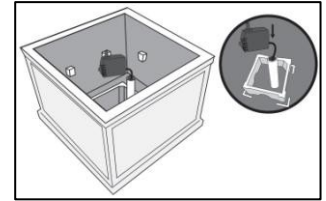


Fig. 1A

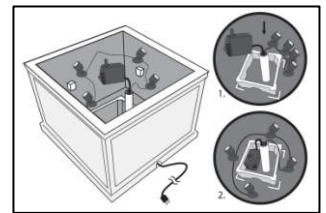


Fig. 1B

2. Drop in Splash Guard onto Bottom Basin. Fig. 2.

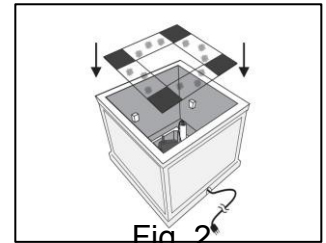


Fig. 2

3. Insert Lower tower into basin. Line up notches in base and tower so that the lower tower sits flush and level. Fig. 3.

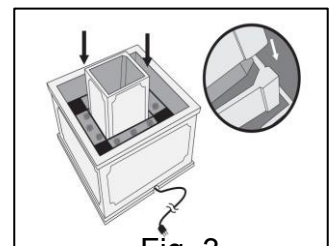


Fig. 3

4. Connect the water tube, which extends from the inside of the top tower, to the outlet of the pump and place upper tower onto lower tower. Position the towers on the basin and check to make sure tower is level. Fig. 4.

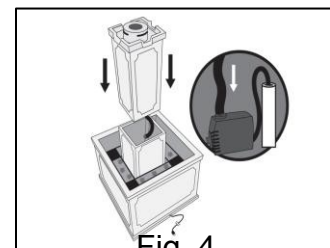


Fig. 4

5. Turn the flow control knob on the pump to the maximum (+) setting. Fig. 5.

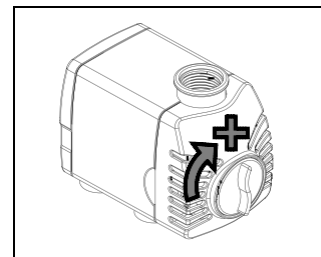


Fig. 5

6. Add clean water into basin. The water level should be approximately 2~3" below the top of the splashguard.

7. Test the initial flow of the fountain by connecting the power cord to a properly grounded receptacle. Once the pump is plugged in the water will begin to flow. If water splashes, unplug the power cord and adjust the flow control knob counterclockwise on the water pump. Fig. 6 & 7.

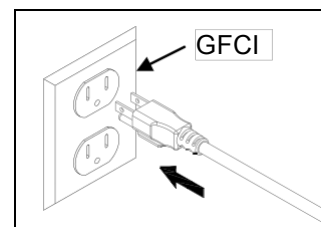


Fig. 6

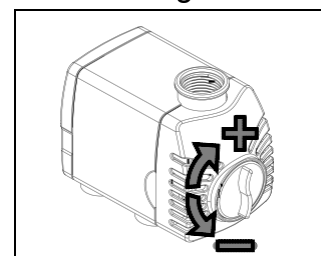


Fig. 7

8. Once satisfied with the flow of the water, setup the lights above splashguard and adjust the beams to point towards the top of the tower. Fig. 8.

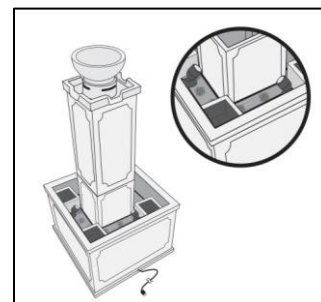


Fig. 8

9. After lights have been adjusted place planters in corners of basin and decorate with flowers (**flowers not included**). Fig. 9.

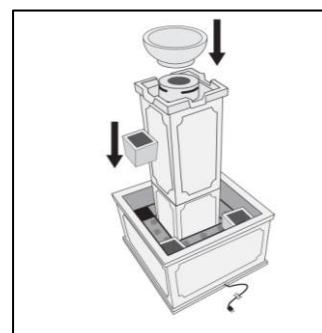


Fig. 9

10. Insert top decoration onto the tower of the fountain. Option A shows the planter bowl, which can be filled with plants, and Option B is the Fire torch. Fig.10.

NOTE: Fire Torch must be filled with citronella oil not included.

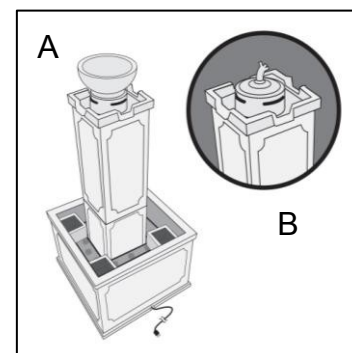


Fig. 10

11. To eliminate the possibility of water damage to areas around your fountain, check for leakage and excessive splashing after the initial setup of your fountain. It is highly recommended that this fountain be placed in an area that will not be damaged if the area comes in contact with water.
12. Do not leave your fountain running for extended periods of time when no one is present to observe the performance.
13. Check the area around your fountain on a regular basis to ensure that there is no leakage.

CARE AND MAINTENANCE

- Regular cleaning of the pump is necessary.
- Keep water clean to prolong the life of pump.
- Clean pump when it is dirty or when a drop in performance is detected. Use warm, soapy water and a stiff brush for heavily stained surfaces. Do NOT use harsh chemicals, as this will damage the surface finish.
- Failure to clean the pump will result in overheating and voiding of the warranty.
- Use a filter on pump if available.
- Disconnect the power and empty the reservoir if the fountain will not be used for an extended time.
- Do NOT operate fountain in temperatures below 41°F (5°C). Freeze damage may occur. If the fountain is kept outdoors in freezing temperatures, make sure all water is removed and the unit is completely dry.

To disassemble pump for cleaning:

- Always disconnect pump from the power source before cleaning.
- Remove the inlet screen and impeller housing.
- Remove the impeller/rotor assembly by gently pulling on the impeller blades.
- Use a soft cloth or brush to clean the impeller/rotor assembly area inside the pump.
- Clean the inlet screen, impeller housing and impeller with warm, soapy water.
- Reassemble the pump and check for proper operation.

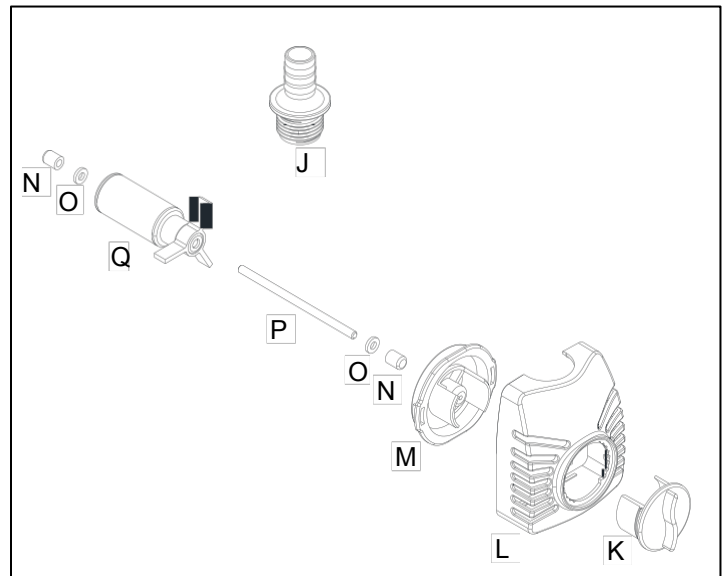
TROUBLESHOOTING

- Set the flow control switch on pump to maximum (+) before operating. Once flow is established, the pump can be adjusted to desired level. Remember to always disconnect pump from the power source before handling.
- If the pump operates but there is no flow, check to make sure that the pump is fully submerged.
- If the pump operates but there is no flow, check the supply tubing for kinks.
- If the pump operates but there is no flow, and if the pump is submerged and there are no kinks in the supply tubing, lift the pump out of the water. Remove supply tubing at pump outlet and clean tubing inside and out if necessary. Put pump back into water (outlet side up). Once water begins to flow, reattach the supply tubing.

REPLACEMENT PARTS LIST

For replacement parts, call our customer service department at 1-888-755-5641, 8 a.m.-6 p.m., EST, Monday-Friday, or email us at customer care@gardeniquedecor.com

Part	Description
J	1/2 in. ID tubing adapter
K	Flow control knob
L	Front cover
M	Impeller cover
N	Shaft support
O	Washer
P	Shaft
Q	Impeller assembly



Printed in China

PLEASE CALL 1 (888) 755-5641 BEFORE RETURNING TO THE STORE.
WWW.GARDENIQUEDECOR.COM

LIMITED WARRANTY

All pumps and electrical products are warranted to the user against defective material and workmanship, under normal working conditions. This warranty period begins on the date of purchase by the original purchaser.

Unless otherwise specified Gardenique® electrical products are warranted to the user against defective material and workmanship, under normal working conditions for 1 year from the date of purchase.

Application

Warranty covers only properly installed and maintained units. Any damage to the cord or modification to the unit will invalidate the warranty. Pump warranty is limited to applications pumping fresh water in a pond or fountain only. Other liquid applications or extreme temperature uses must be approved in writing by the manufacturer. Receipt and product date code are required for warranty claims.

Warranty Claim

Warranty claims must be made by calling customer service (at 1-888-755-5641). If the item is determined to be defective, you will be given authorization to return the defective part(s), freight pre-paid, along with proof of purchase.

Disposition

The manufacturer will make a good faith effort for prompt disposition regarding all warranty claims. Returned product will be inspected to determine cause of failure before warranty is applied. Warranty does not cover any costs associated with the shipping, handling, installation or removal of products or parts subject to this warranty. For products damaged in transit, a claim should be filed with the carrier.

Disclaimer

Any oral statements made about the product by the seller, the manufacturer, the representatives, or any other parties do not constitute warranties, should not be relied upon by the user, and are not part of the contract for sale. The seller's and manufacturer's only obligation, and buyer's only remedy shall be for the manufacturer to either replace and/or repair at the manufacturer's sole discretion, the product as described above. Neither seller nor the manufacturer shall be liable for injury, loss or damages for lost profits, lost sales, injury to person or property, or any other incidental or consequential loss arising from any cause whatsoever, no matter whether based upon warranty, contract, negligence or other misuse, and the buyer and user agree that no other remedy shall be available to them. Before using, the buyer and user shall determine the suitability of the product for the intended use, and assume all risk and liability whatsoever in connection therewith. The warranty and remedy described in this limited warranty is an exclusive warranty and remedy in lieu of any other warranty or remedy expressed or implied. All other warranties and remedies are hereby expressly excluded, including but not limited to any implied warranty of merchantability of fitness for any particular purpose. This warranty gives the buyer and user specific legal rights, and buyer and user may also have other rights which vary from state to state. Some states do not allow exclusions or limitations of incidental or consequential damages, so the above limitations or exclusions may not apply to you.

REMINDER
CALL 1-888-755-5641
BEFORE RETURNING TO STORE.